

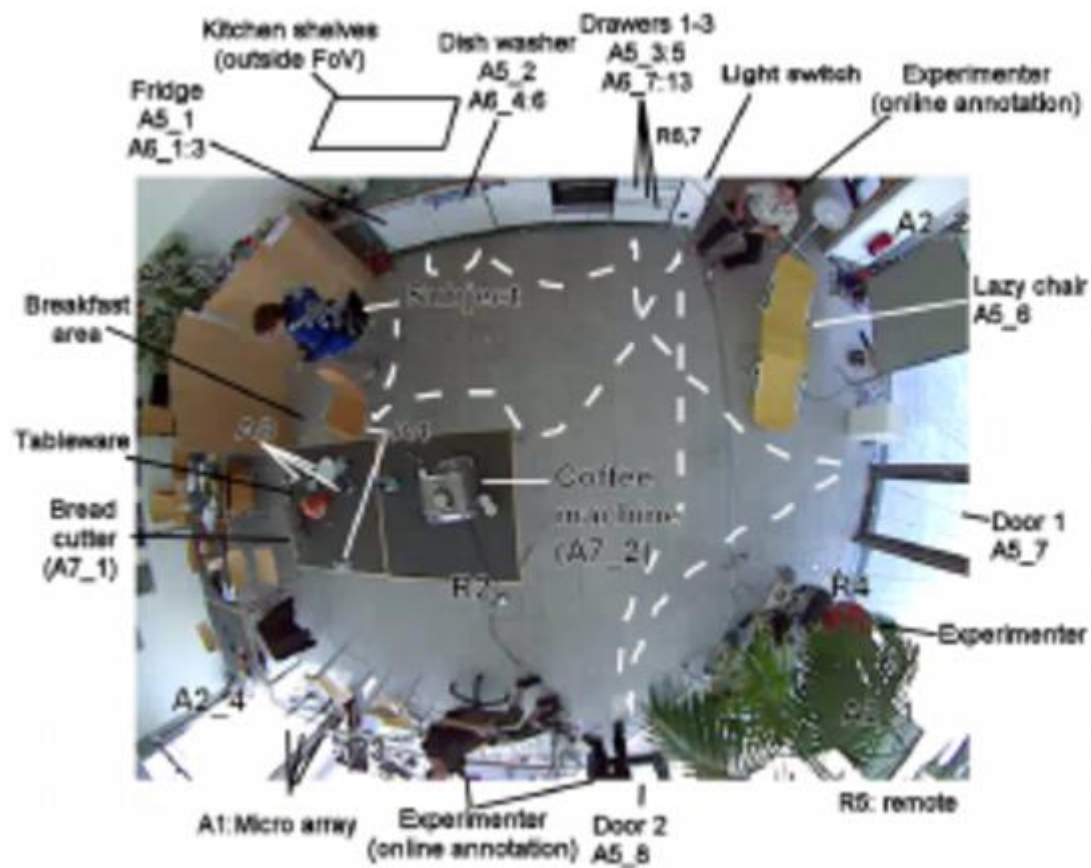
Datasets

Activity Recogniton

Opportunity

<https://archive.ics.uci.edu/ml/datasets/opportunity+activity+recognition>

Description



Sensor data

- Body-worn sensors:
 - 7 inertial measurement units
 - 12 3D acceleration sensors
 - 4 3D localization information
- Object sensors:
 - 12 objects with 3D acceleration and 2D rate of turn
- Ambient sensors:
 - 13 switches
 - 8 3D acceleration sensors

Annotations

Locomotion	LL_Left_Arm	LL_Left_Arm_Object	LL_Right_Arm	LL_Right_Arm_Object	ML_Both_Arms	HL_Activity
Stand	unlock	Bottle	unlock	Bottle	Open_Door1	Relaxing
Walk	stir	Salami	stir	Salami	Open_Door2	Coffee time
Sit	lock	Bread	lock	Bread	Close_Door1	Early morning
Lie	close	Sugar	close	Sugar	Close_Door2	Cleanup
	reach	Dishwasher	reach	Dishwasher	Open_Fridge	Sandwich time
	open	Switch	open	Switch	Close_Fridge	
	sip	Milk	sip	Milk	Open_Dishwasher	
	clean	Drawer3 (lower)	clean	Drawer3 (lower)	Close_Dishwasher	
	bite	Spoon	bite	Spoon	Open_Drawer1	
	cut	Knife cheese	cut	Knife cheese	Close_Drawer1	
	spread	Drawer2 (middle)	spread	Drawer2 (middle)	Open_Drawer2	
	release	Table	release	Table	Close_Drawer2	
	move	Glass	move	Glass	Open_Drawer3	
		Cheese		Cheese	Close_Drawer3	
		Chair		Chair	Clean_Table	
		Door1		Door1	Drink_Cup	
		Door2		Door2	Toggle_Switch	
		Plate		Plate		
		Drawer1 (top)		Drawer1 (top)		
		Fridge		Fridge		
		Cup		Cup		
		Knife salami		Knife salami		
		Lazychair		Lazychair		

CMU-MIMAC

<http://kitchen.cs.cmu.edu/>

Description



Sensor data

- **Video:**
 - Three high spatial resolution (1024 x 768, 30 Hertz).
 - Two low spatial resolution (640 x 480, 60 Hertz).
 - One wearable high spatial resolution (800 x 600 / 1024 x 768, 30 Hertz).
- **Audio:**
 - Five balanced microphones.
- **Motion Capture:**
 - A Vicon motion capture system with 12 infrared MX-40 cameras.
- **Internal Measurement Units (IMUs):**
 - Wired IMUs (3DMGX).
 - Bluetooth IMUs (6DOF).
- **Wearable devices:**
 - BodyMedia.
 - eWatch.

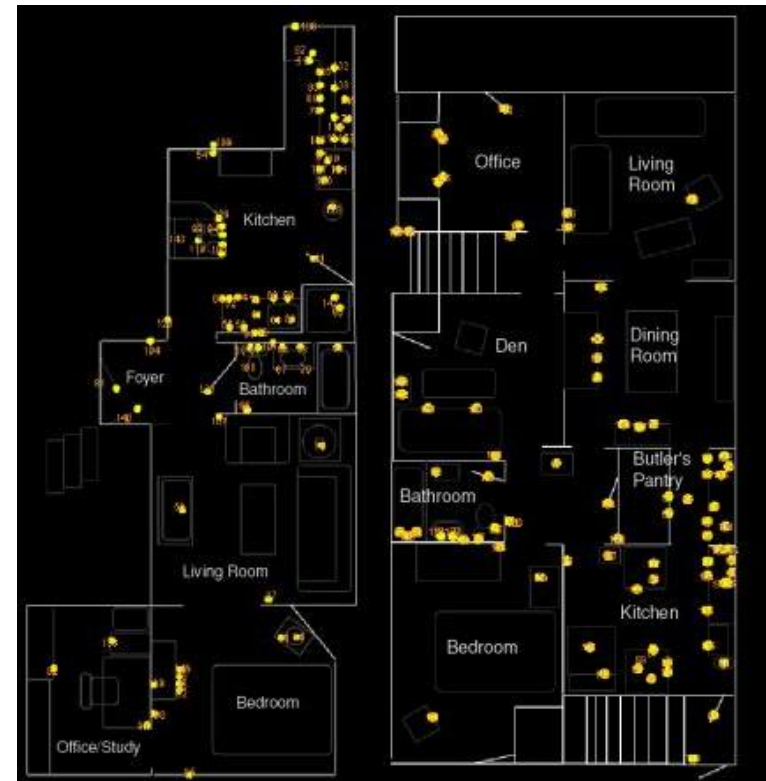
Annotations

Verb	Object 1	Preposition	Object 2
Close	Baking pan	Into	Baking pan
Crack	Big bowl	To	Big bowl
Open	Brownie bag		Counter
Pour	Brownie box		Cupboard
Put	Cap		Drawer
Spray	Cupboard		Fridge
Stir	Drawer		Measuring cup
Switch on	Egg		Oven
Take	Fork		
Walk	Fridge		

MIT Activity

<http://courses.media.mit.edu/2004fall/mas622j/04.projects/home/>

Description



Sensor data

Preparing lunch	04/01/2003	11:21:17	11:38:22		
140	137	131	53	84	131
Door	Freezer	Toaster	Cabinet	Drawer	Toaster
11:23:04	11:23:55	11:24:08	11:34:59	11:35:04	11:35:12
11:23:07	11:24:03	11:24:14	11:35:01	11:35:07	11:35:22

Annotations

- Preparing dinner
- Preparing lunch
- Listening to music
- Taking medication
- Toileting
- Preparing breakfast
- Washing dishes
- Preparing a snack
- Watching TV
- Bathing
- Going out to work
- Dressing
- Grooming
- Preparing a beverage
- Doing laundry
- Cleaning

WSU CASAS

<http://casas.wsu.edu/datasets/>

Description



Sensor data

- Motion sensors
- Item sensors
- Temperature sensors

2008-02-27	12:43:27.416392	M08	ON	Phone_Call begin
2008-02-27	12:43:27.8481	M07	ON	
2008-02-27	12:43:28.487061	M09	ON	
2008-02-27	12:43:29.222889	M14	ON	
2008-02-27	12:43:29.499828	M23	OFF	
2008-02-27	12:43:30.159565	M01	OFF	
2008-02-27	12:43:30.28561	M07	OFF	
2008-02-27	12:43:31.491254	M13	ON	
2008-02-27	12:43:31.491254	M08	OFF	

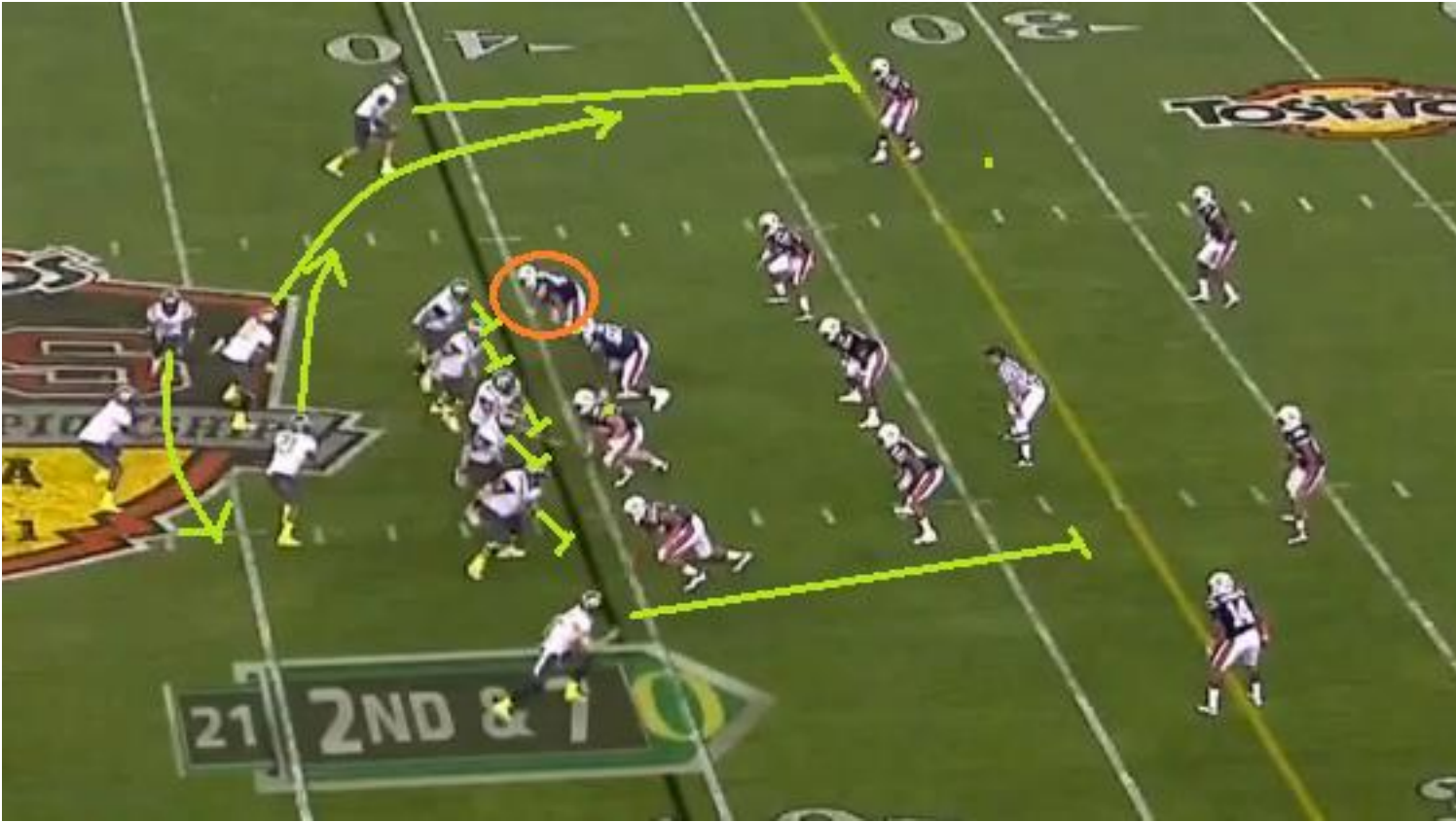
Annotations

- Make a phone call
- Wash hands
- Cook
- Eat
- Clean

Rush Football Plays

<http://ial.eecs.ucf.edu/Data/RushFootballPlays.zip>

Description



Structure

Play#	Obs#	Team	Player	Pos X	Pos Y	Direction	Action
0	2	offense	QB	0.0	-3.0	None	WaitingForSnap
0	2	offense	RB	-3.0	-6.0	None	WaitingForSnap
0	2	offense	FB	3.0	-6.0	None	WaitingForSnap
0	2	offense	LWR	-13.0	0.0	None	WaitingForSnap

Formatted

	QB	RB	FB	RTE
0	WaitingForSnap	WaitingForSnap	WaitingForSnap	WaitingForSnap
1	RunningTo 0.0 -6.0	RunningTo 8.0 -5.0	RunningTo 12.0 0.0	RunBlocking
2	RunningTo 0.0 -6.0	RunningTo 8.0 -5.0	RunningTo 12.0 0.0	RunBlocking
3	Waiting	Sweeping	RunBlocking	RunBlocking
4	Waiting	Sweeping	RunBlocking	RunBlocking
5	Waiting	Sweeping	RunBlocking	RunBlocking